

TESSUTI-ECOPELLI-PELLI  
NOBILITATI-DECOR SUPERMAT-VETRI  
LACCATURE-DECORAZIONI

*Fabrics - Eco leathers - Leathers  
Melamine-Decor Supermat-Glasses  
Lacquered - Decorations*

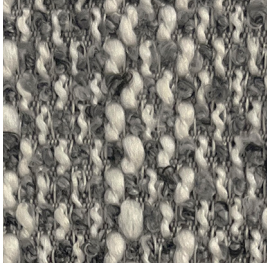
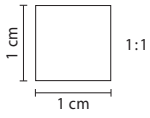
# Finishings

clei

# TESSUTI - FABRICS

clei

Aggiornamento Salone del Mobile 2025 - Salone del Mobile 2025 Update



TB117  
BS5852 PLANET 16  
CAT. 3



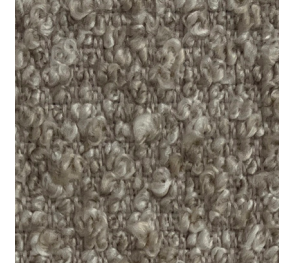
TB117  
BS5852 CLARON 06  
CAT. 3



TB117  
BS5852 CLARON 24  
CAT. 3



TB117  
BS5852 MORGAN 14  
CAT. 2



TB117  
BS5852 PUTTY 27  
CAT. 3



TB117  
BS5852 MORGAN 34  
CAT. 2



TB117  
BS5852 CLARON 54  
CAT. 3



TB117  
BS5852 MORGAN 54  
CAT. 2



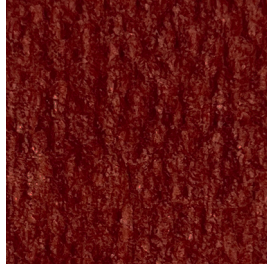
TB117  
BS5852 PLANET 64  
CAT. 3



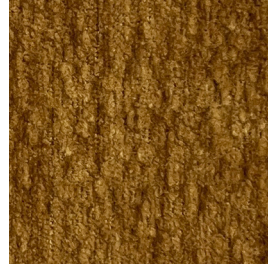
TB117  
BS5852 MORGAN 93  
CAT. 2



TB117  
BS5852 BRICK 15  
CAT. 3



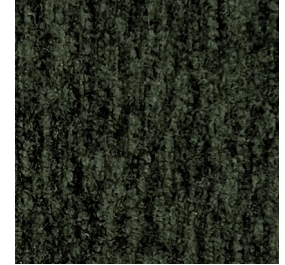
TB117  
BS5852 MORGAN 59  
CAT. 2



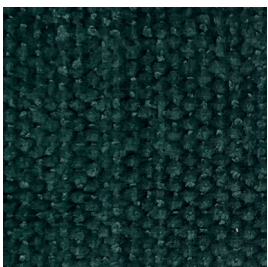
TB117  
BS5852 MORGAN 35  
CAT. 2



TB117  
BS5852 MORGAN 28  
CAT. 2



TB117  
BS5852 MORGAN 38  
CAT. 2



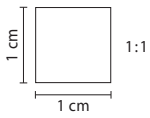
TB117  
BS5852 SOFFIO 13  
CAT. 2

# Caratteristiche Tessuti - Fabrics Features

clei

Aggiornamento Salone del Mobile 2025 - Salone del Mobile 2025 Update

Nome Name	Nome Tessuto Fabric name	Cod. Articolo Cod. Article	Cat.	H.	Composizione Composition	Res. Luce Res. light	Martindale (cicli) Martindale (cycles)	Ignifugo Flameproof	Finissaggio Fabric Treatment	Lavaggio Washing
CLARON	Claron 06 Claron 24 Claron 54	TEXCLA	3	140	100% Poliestere	5	100.000	TB117 e BS5852 Source 0	Quick Clean	
MORGAN	Morgan 14 Morgan 28 Morgan 34 Morgan 35 Morgan 38 Morgan 54 Morgan 59 Morgan 93	TEXMOR	2	140	100% Poliestere	6	70.000	TB117 e BS5852 Source 0	Quick Clean	
PLANET	Planet 16 Planet 64	TEXPLA	3	140	51% Polyolefin Riciclato 27% PL - 22% AC	5	45.000	TB117 e BS5852 Source 0	Quick Clean	
RAPTOR	Brick 15 Putty 27	TEXRAP	3	140	18% Poliestere Riciclato 16% Polypropylene Riciclato 63% Acrilico 3% Poliestere	6	30.000	TB117 e BS5852 Source 0		
SOFFIO	Soffio 13	TEXSOF	2	140	100% PES	4	100.000	TB117 e BS5852		



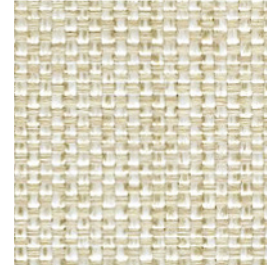
TB117  
BS5852 ALABASTRO  
CAT. 3



TB117  
BS5852 CANVAS  
CAT. 4



TB117  
BS5852 FIOR DI SALE  
CAT. 1



TB117  
BS5852 ROGER 14 PERGAMENA  
CAT. 1



TB117  
BS5852 NAOMI 01 / ARENA  
CAT. 3



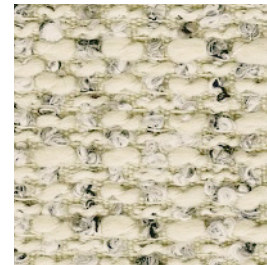
TB117  
BS5852 GUAREI 1 LIMBO  
CAT. 2



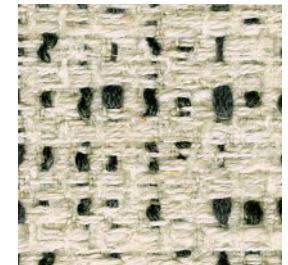
TB117  
BS5852 CERVINO  
CAT. 3



TB117  
BS5852 SHELL  
CAT. 1



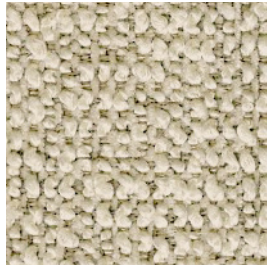
TB117  
BS5852 PEPPER  
CAT. 3



TB117  
BS5852 BARK  
CAT. 4



TB117  
BS5852 (PART 1) GREIGE  
CAT. 2



TB117  
BS5852 JOCKER 2 CERULEO  
CAT. 2



TB117  
BS5852 LIMO  
CAT. 4



TB117  
BS5852 CATTEDRALE  
CAT. 4



TB117  
BS5852 SPOLETO  
CAT. 1



TB117  
BS5852 NAOMI / 112 SHADOW  
CAT. 3



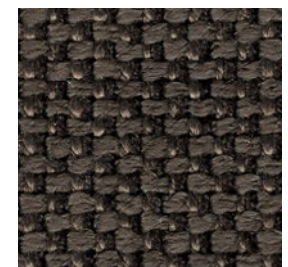
TB117  
BS5852 PASTELLO 8 SAFARI  
CAT. 2



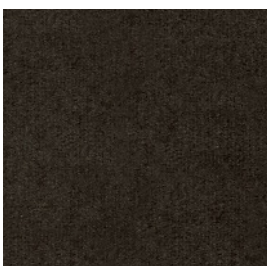
TB117  
BS5852 CORTECCIA  
CAT. 1



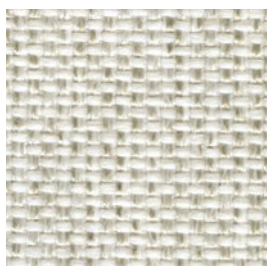
TB117  
BS5852 VESUVIO  
CAT. 2



TB117  
BS5852 TOFFE  
CAT. 1



TB117  
BS5852 (PART 1) STROMBOLI  
CAT. 2



TB117  
BS5852 OYSTER  
CAT. 2



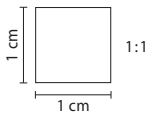
TB117  
BS5852 GHIAIA  
CAT. 4



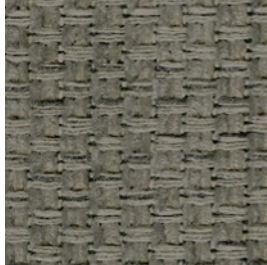
TB117  
BS5852 QUARZ  
CAT. 1



TB117  
BS5852 ANVERSA  
CAT. 2



TB117 BS5852 RONDINE CAT. 4



TB117 BS5852 VALENCIA 301 CEMENTO CAT. 2



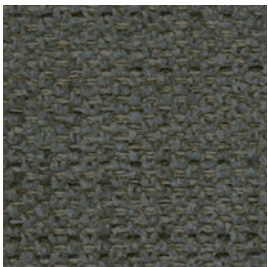
TB117 BS5852 INVERNO CAT. 1



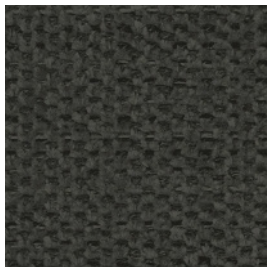
TB117 BS5852 (PART 1) ELEFANTE CAT. 2



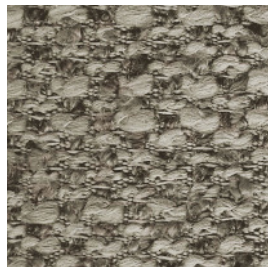
TB117 BS5852 FOSSIL CAT. 1



TB117 BS5852 NAOMI 213 / STONE CAT. 3



TB117 BS5852 NAOMI 13 / CHARCOAL CAT. 3



TB117 BS5852 LAPILLO CAT. 3



TB117 BOGART 6 AQUILA CAT. 2



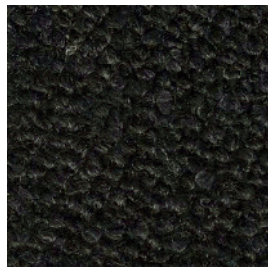
TB117 BS5852 PIRATA CAT. 2



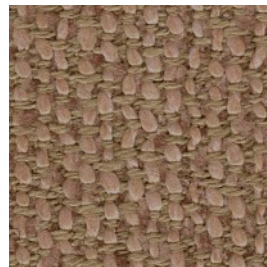
TB117 BS5852 VORTICE CAT. 1



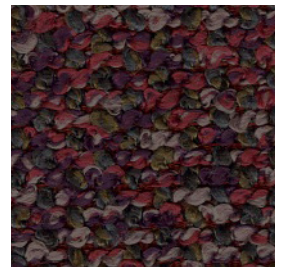
TB117 BS5852 RAVEN CAT. 3



TB117 BS5852 KAJAL CAT. 2



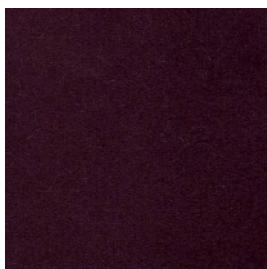
TB117 BS5852 WILD ROSE CAT. 3



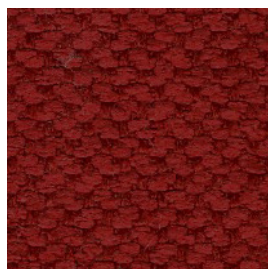
TB117 BS5852 MONET CAT. 3



TB117 BS5852 PLUM CAT. 1



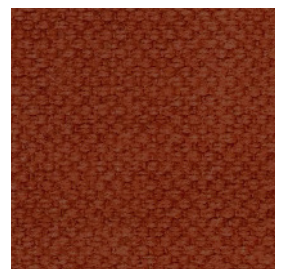
TB117 BS5852 (PART 1) IMPERO CAT. 2



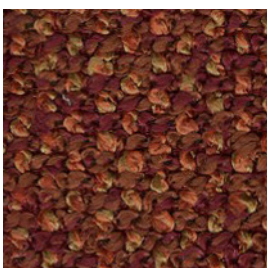
TB117 BS5852 GARIBALDI CAT. 1



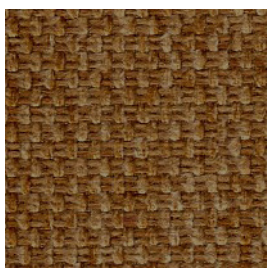
TB117 BS5852 (PART 1) LIVERPOOL CAT. 2



TB117 BS5852 MARTE CAT. 2



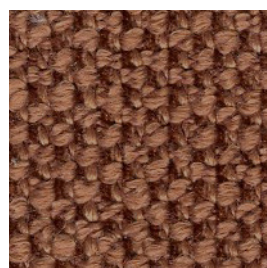
TB117 BS5852 BOURBON CAT. 3



TB117 BS5852 CAMEO CAT. 1



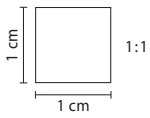
TB117 BS5852 (PART 1) COGNAC CAT. 2



TB117 BS5852 UMBRIA CAT. 1



TB117 BS5852 AVENA CAT. 3



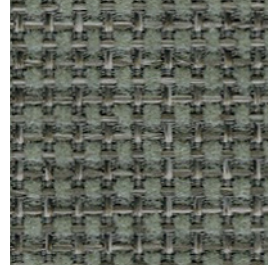
TB117  
BS5852 HARVEST  
CAT. 1



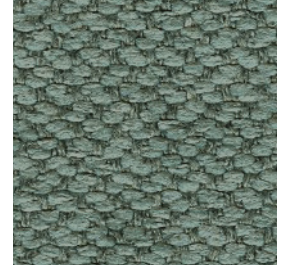
TB117 MUSTARD  
CAT. 3



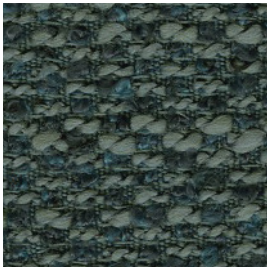
TB117  
BS5852 VOLGA  
CAT. 3



TB117  
BS5852 EGEO 27 ZUCCHERO  
CAT. 2



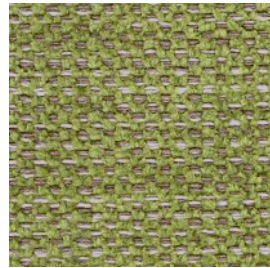
TB117  
BS5852 ANATRA  
CAT. 1



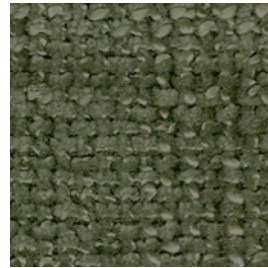
TB117  
BS5852 CAREZZA  
CAT. 3



TB117  
BS5852 (PART 1) AMSTERDAM 48 RABBIA  
CAT. 2



TB117  
BS5852 NAOMI 323 / KIWI  
CAT. 3



TB117  
BS5852 VENEZIA  
CAT. 2



TB117  
BS5852 LOTUS  
CAT. 1



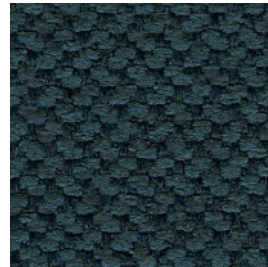
TB117  
BS5852 VENTO  
CAT. 1



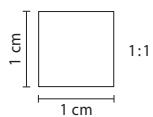
TB117  
BS5852 FINLAND  
CAT. 1



TB117  
BS5852 (PART 1) AIR FORCE  
CAT. 2

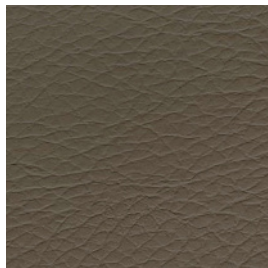


TB117  
BS5852 SCOZIA  
CAT. 1



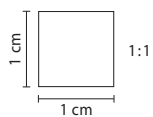
TB117  
CLASSE 1

637 BLANCO  
CAT. 2

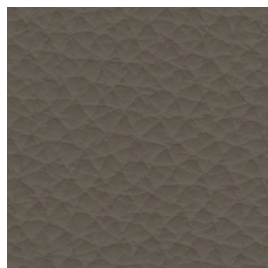


TB117  
CLASSE 1

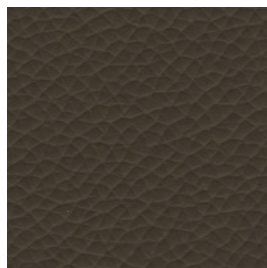
637/4 SANDALO  
CAT. 2



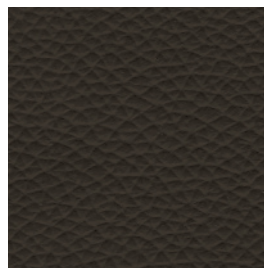
TB117 BOXLAND / 7732 ORSO  
UNIEN 1021-1-2 CAT. PELLE - LEATHER



TB117 BOXLAND / 7733 GREY  
UNIEN 1021-1-2 CAT. PELLE - LEATHER



TB117 PANAMA/5504 TERRA  
UNIEN 1021-1-2 CAT. PELLE - LEATHER



TB117 PANAMA/5310 LAVA  
UNIEN 1021-1-2 CAT. PELLE - LEATHER



Nome Name	Nome Tessuto Fabric name	Cod. Articolo Cod. Article	Cat.	H.	Composizione Composition	Res. Luce Res. light	Martindale (cicli) Martindale (cycles)	Ignifugo Flameproof	Finissaggio Fabric Treatment	Lavaggio Washing
1407	Marte	TEX1407	2	140	63 CO 37%LI%	4/5	32.500	BS5852 TB117		
637	Blanco - Sandalo	TEX637	2	137	8%PU 70%PVC 22%PL	4/5	50.000	CLASSE 1 Tb117		
AGAMOTTO	Ghiaia	TEXAGA	4	140	30 % VI - 16 %WO - 13 % LI - 12 % CO - 10 % PA - 9 % PL - 6% SE - 4 % PC	6/7	30.000	TB117		
BLIZARD	Venezia	TEXBLI	2	140	100%PL	5	100.000	BS5852 TB117	Idrorepellente	
BOGART	Aquila	TEXBOGART	2	140	73%PL 27%AC	4/5	100.000	TB117		
BRERA	Cattedrale - Rondine	TEXBRE	4	140	59 %PC - 26% CO - 10% WO - 5 %PL	4/5	30.000	BS5852 TB117		
CAPULET	Fior di sale - Cortecchia - lotus - Cameo	TEXCAP	1	140	100%PL	5	30.000	BS5852 TB117		
COPENHAGEN	Inverno	TEXCOP	1	140	100%PL	5	100.000	BS5852 TB117	Idrorepellente	
EGEO	Zucchero	TEXEGEO	2	140	100%PL	4/5	40.000	BS5852 TB117	Idrorepellente	
FICTION	Fossil - Toffe - Plum - Quarz - Umbria	TEXFIC	1	140	100 % PES	5	100.000	BS5852 TB117		
FOREVER	Raven - Bourbon - Monet	TEXFOR	3	140	100% PL	3/4	40.000	BS5852 TB117 BS5852 TB117	Quick clean	
GUAREI	Limbo	TEXGUAREI	2	140	77%PL 17%CO 6%PC	5/6	50.000	BS5852 TB117		
INDIANSKOP	Limo	TEXIND	4	140	34 % VI - 31 % CO - 15 % LI - 13 %PC - 7% PL	5/6	25.000	BS5852 TB117		
JOKER	Ceruleo	TEXJOKER	2	140	100%PL	4/5	45.000	BS5852 TB117		
LARIO	Wild Rose - Alabastro - Cervino	TEXLAR	3	140	42% CO- 26% PL- 32% PC	5/6	45.000	BS5852 TB117		
LEVANTE	Canvas	TEXLEV	4	140	47 %PC - 19 % WO - 16 % PL - 15 % CO - 3% NY	4/5	30.000	BS5852 TB117		
LIMA	Vesuvio - Anversa	TEXLIM	2	140	100 % PL	5	90.000	BS5852 TB117	Idrorepellente	
NAOMI	Arena - Shadow - Charcoal - Stone - Kiwi	TEXNAO	3	140	344 % CO - 56% PL	5	50.000	BS5852 TB117		
OSTELLATO	Volga - Avena	TEXOST	3	140	65 % CO - 13 % VI - 11 % PC - 9 % PL - 2 % LI	5/6	35.000	BS5852 TB117		
PANTHEON	Bark	TEXPAN	4	140	29% VI - 23% PC - 24% CO - 14 % LI - 7% PL - 3% PA - 1% WO	4/5	20.000	TB117		

Nome Name	Nome Tessuto Fabric name	Cod. Articolo Cod. Article	Cat.	H.	Composizione Composition	Res. Luce Res. light	Martindale (cicli) Martindale (cycles)	Ignifugo Flameproof	Finissaggio Fabric Treatment	Lavaggio Washing
PASTELLO	Safari	TEXPASTELLO	2	140	85%PL 15%VI	4/5	50.000	BS5852 TB117		
PLANET	Pepper - Lapillo - Carezza	TEXPLA	3	140	51 % RICICLATO POLYOLEFIN -27 % PL - 22 % AC	5	45.000	BS5852 TB117	Quick clean riciclato	
PONGO	Mustard	TEXPON	3	140	80 % PES - 20 % CO	4/5	100.000	TB117		
PREZ	Oyster	TEXPRE	2	140	100%PP	7/8	40.000	BS5852 TB117		
RING	Kajal -Pirata	TEXRIN	2	140	100%PL	5	100.000	BS5852 TB117		
ROGER	Pergamena	TEXROGER	1	140	55%PL 45%PP	5	40.000	BS5852 TB117		
ROTTERDAM	Greige - Elefante Liverpool - Impero Air force - Cognac Stromboli - Rabbia	TEXROT	2	140	100%PL	5	100.000	BS5852 TB117		
SIDNEY	Shell -Harvest	TEXSID	1	140	100%PL	5	100.000	BS5852 TB117	Quick clean	
TOKIO	"Spoleto - Vento Anatra - Finland Garibaldi Scozia - Vortice"	TEXTOK	1	140	100%PL	4/5	100.000	BS5852 TB117	Idrorepellente	
VALENCIA	Cemento	TEXVAL	2	140	49%PL 51%CO	5	40.000	BS5852 TB117	Idrorepellente	

Articolo Article	Cat.	Composizione Composition	Res. Luce Res. light	Martindale (cicli) Martindale (cycles)	Ignifugo Flameproof
TEXPANAMA	PELLE LEATHER	Pelle bovina di origine Europea conciata al cromo Chrome tanned cattle hide originating in Europe	6+	50.000	UNI EN 1021 - 1 - 2TB117
TEXBOXLAND	PELLE LEATHER	Pelle di origine bovina conciata al cromo Chrome tanned cattle hide	6+	50.000	UNI EN 1021 - 1 - 2TB117

## PULIZIA E MANUTENZIONE - CLEANING AND MAINTENANCE



**Evitare la luce diretta del sole**  
*Avoid direct sunlight*



**Evitare l'esposizione a fonti di calore**  
*Avoid exposure to heat sources*



**Spolverare regolarmente la pelle con un panno morbido e asciutto**  
*Dust the leather regularly with a soft, dry cloth*



**Eventuali macchie si possono eliminare usando un panno inumidito con acqua e sapone neutro**  
*Any stains can be removed using a damp cloth and neutral soap*



**Asciugare immediatamente dopo il trattamento**  
*Dry immediately after treatment*



**Non strofinare, ma tamponare delicatamente dai bordi al centro della macchia**  
*Do not rub, but delicately dab from the edge towards the centre of the stain*

## CERTIFICAZIONI - CERTIFICATIONS



UNI 11239



ISO 14025



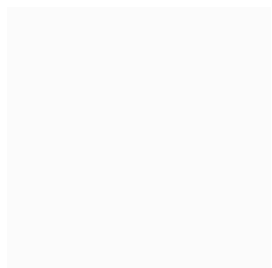
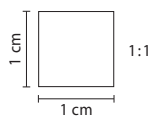
ISO 14067/CD2



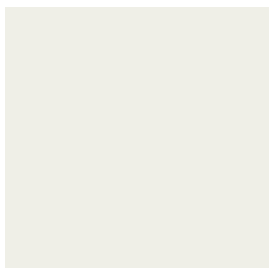
RAL-UZ 148



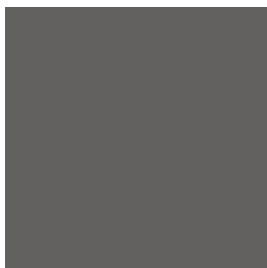
RAL-GZ 430



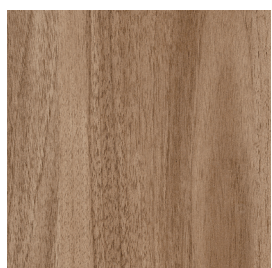
BIANCO



PERLA



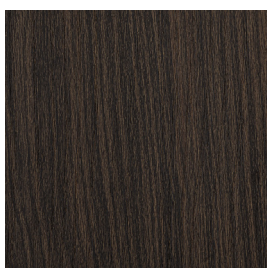
GRAFITE



NOCE



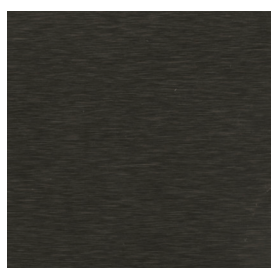
ROVERE SABBIA



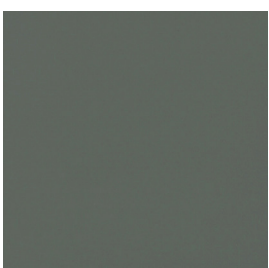
ROVERE DAKAR

## DECOR SUPERMAT

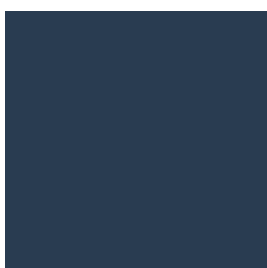
---



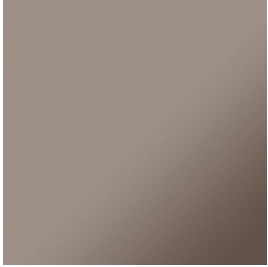
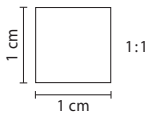
ANTRAX BRUSHED METAL  
SATINATO



SUPERMAT VERDE SALVIA



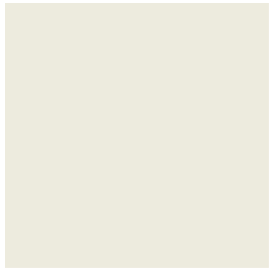
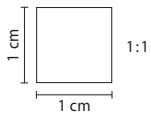
SUPERMAT PARISIAN BLUE



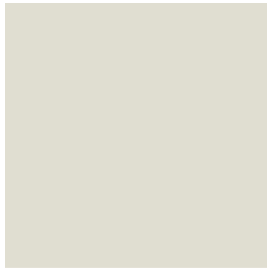
BRONZO  
BRONZE



TRASPARENTE  
TRASPARENT



DOVER



TALCO



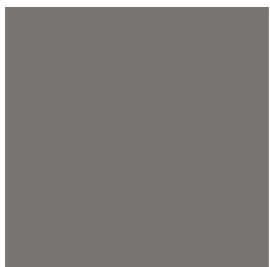
SAND



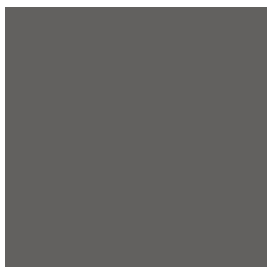
DESERTO



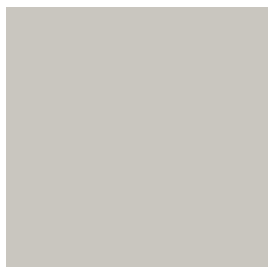
ARIZONA



LONDRA



ANTRACITE



CENERE



FUMO



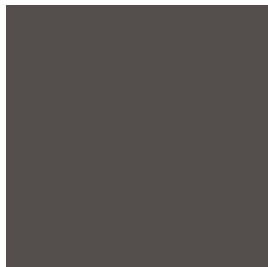
PELTRO



ALLUMINIO



ONICE



CACAO



NERO



TORRENTE



INDIO



AZZURRO POLVERE



NOTTE



PISTACCHIO



FIORDO



BORNEO



TUFO



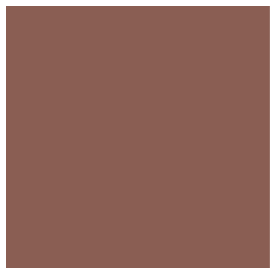
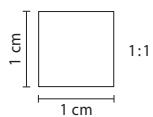
SENAPE



IVREA



PESCA



TERRACOTTA



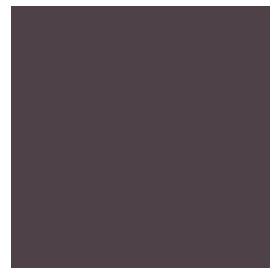
MANGO



CARDINALE



POMPEI



PRUGNA

## Wave - Quadra - Petalo - Dot

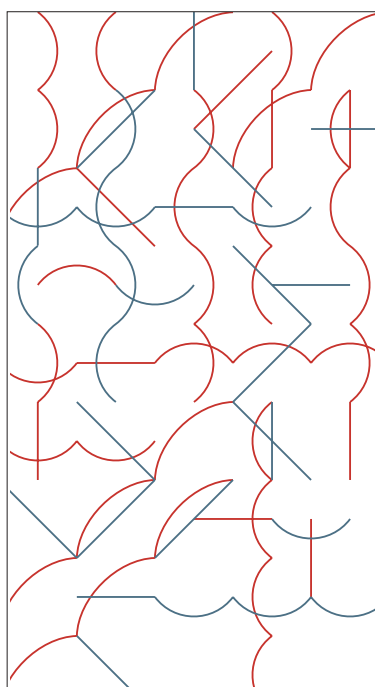
La stampa digitale viene eseguita solo su pannelli di facciata, su base nella finitura laccata dover e nelle configurazioni standard rappresentate. Le proporzioni delle stampe variano in base alla dimensione del pannello di facciata. Le caratteristiche e il colore della stampa sono indicative e potrebbero cambiare con ragionevole tolleranza.

*The digital printing is carried out only on front panels, on lacquered Dover finish base and in the fixed configurations shown.*

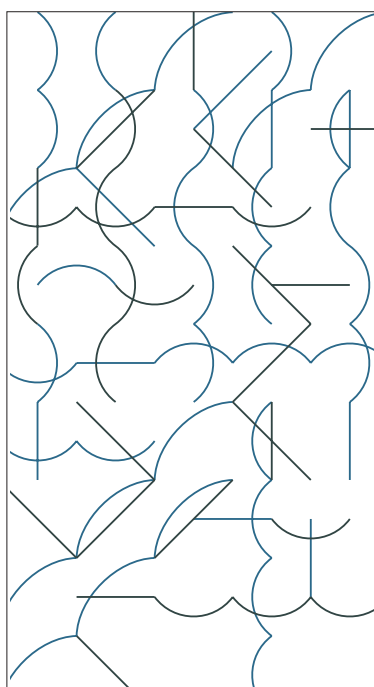
*Proportions of prints vary according to the size of the front panel.*

*Features and colours of print are indicative and could vary with reasonable tolerance.*

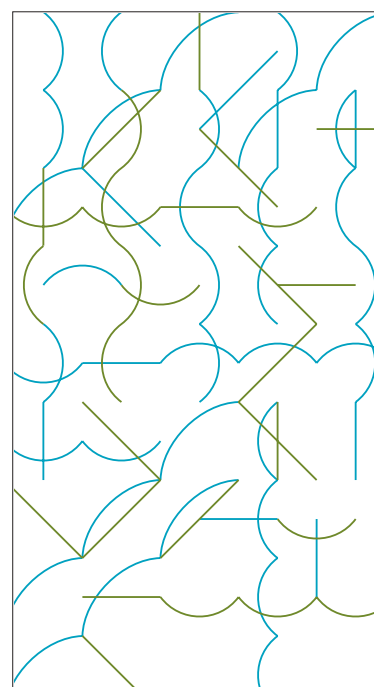
## VERSIONE WAVE



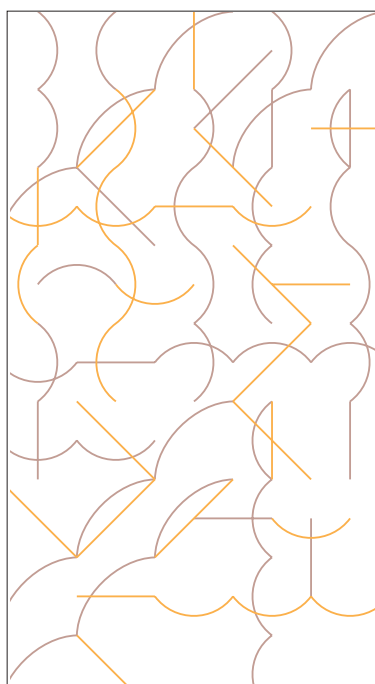
MANGO, AZZURRO POLVERE



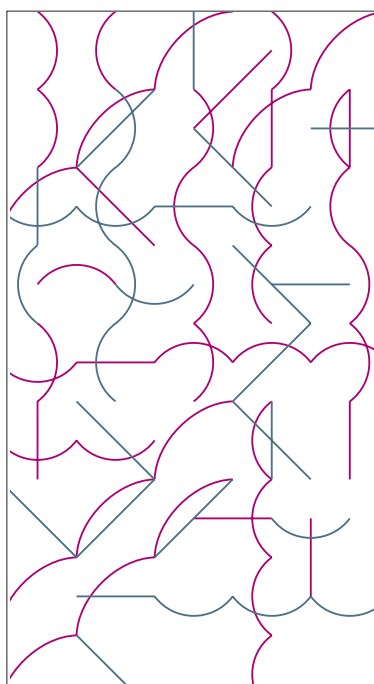
TIMO, INDIO



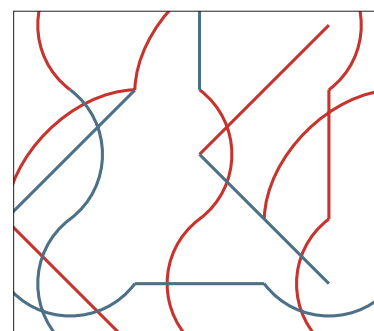
CAPRI, KIWI



CIPRIA, ORZO



PEONIA, AZZURRO POLVERE



DETTAGLIO



VERSIONE QUADRA



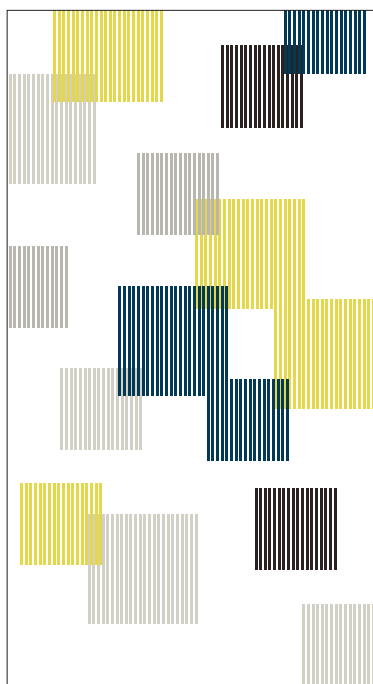
SAND, CANAPA, SALVIA,  
MAROCCO, CIPRIA



SAND, CANAPA, ABISSO,  
INDIO, TIMO



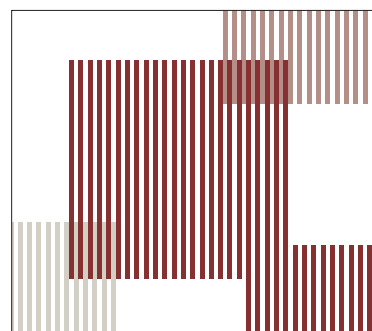
SAND, CANAPA, CAFFÈ,  
TIBET, HOLLAND



SAND, CANAPA, CAFFÈ,  
DANUBIO, NETTARE



SAND, CANAPA, ABISSO,  
FANGO, ARGILLA



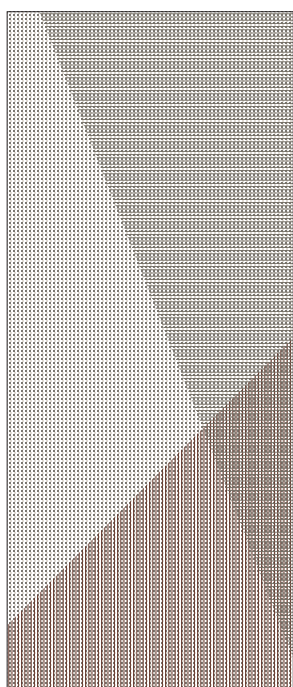
DETTAGLIO

## Dot

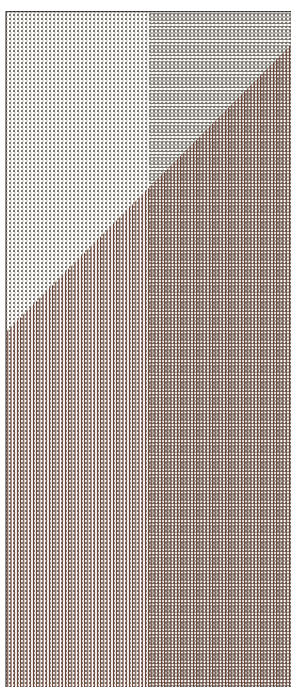
Solo per modello Ella & Louis

*Only for model Ella & Louis*

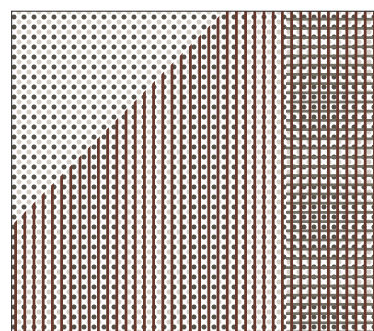
### VERSIONE DOT



DOT SX



DOT DX



DETTAGLIO

# STAMPA A RILIEVO 3D - 3D RELIEF PRINTING

clei

Solo per modello Tonale.

La stampa in 3D viene eseguita solo sui pannelli di facciata, su base nella finitura melaminico bianco e nella configurazione standard rappresentata, e in secondo tempo verniciata nei colori selezionati dalla cartella Cleicoloursystem.

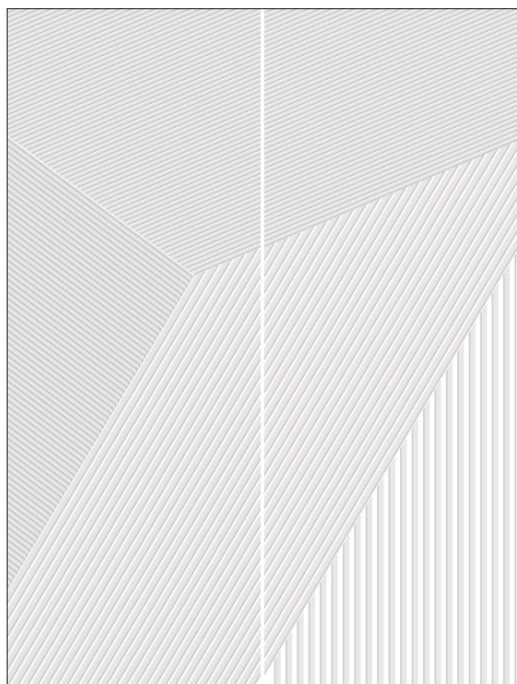
Le caratteristiche ed il colore sono indicative e potrebbero cambiare con ragionevole tolleranza. Con l'ordine e la relativa conferma, il committente accetta tali tolleranze.

*Only for model Tonale.*

*3D printing is carried out only on front panels, on melamine white finish base, and in the fixed configurations shown, and afterwards painted in one colour of the Cleicoloursystem.*

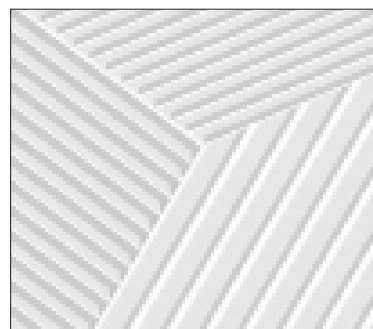
*Features and colours of print are indicative and could vary with reasonable tolerance.*

*Upon the order and validation of the related confirmation of order, customer accepts these tolerances.*



## **Colori abbinabili alla stampa 3D** **Colours matchable to 3D printing.**

- Laccato Dover
- Laccato Sand
- Laccato Deserto
- Laccato Terracotta
- Laccato Antracite
- Laccato Cacao
- Laccato Borneo
- Laccato Cardinale



DETTAGLIO

IT \_ I colori e le finiture visualizzate in questo documento sono puramente indicativi e possono differire dagli originali. L'azienda si riserva il diritto di apportare modifiche ai propri colori di serie in qualsiasi momento e senza alcun obbligo di preavviso.

EN \_ Colours and finishes shown in this document are approximate and may differ from actual ones. The company reserves the right to make modifications to this list at any time and without prior notice.